



NHSC 101

Wisconsin Area Health Education Centers

February 1, 2023

LCDR Tara Dondzila | Public Health Analyst

Division of Regional Operations - Chicago
Bureau of Health Workforce (BHW)
Health Resources and Services Administration (HRSA)



Health Resources and Services Administration (HRSA)

- **Supports more than 90 programs** that provide health care to people who are geographically isolated, economically or medically vulnerable
- **HRSA does this through grants and cooperative agreements** to more than 3,000 awardees, including community and faith-based organizations, colleges and universities, hospitals, state, local, and tribal governments, and private entities
- **Every year, HRSA programs serve tens of millions of people**, including people living with HIV/AIDS, pregnant women, mothers and their families, and those otherwise unable to access quality health care



Bureau of Health Workforce (BHW)

- BHW improves the health of underserved populations by strengthening the health workforce and connecting skilled professionals to communities in need.
- We approach our grant awards, loan repayment, and scholarship programs as a continuum of education, training and service.
- Following this approach, we work to create a well-distributed and robust workforce supply of diverse, culturally competent health professionals who provide quality health care in high-need areas of the U.S. and its territories.
- Specifically, our scholarship and loan repayment programs help underserved communities recruit and retain primary health care providers.



The National Health Service Corps

For more than 50 years, the NHSC has worked to:

- **Build healthy communities by supporting qualified health care providers** dedicated to working in areas of the United States and its territories with limited access to primary health care, regular dental and behavioral health care, and preventive screenings.
- **Improve access to these crucial services** by practicing in health professional shortage areas across the country.
- **Help clinicians pay off their health professional student loan debt in exchange for their service in high-need areas** through scholarships and loan repayment programs.



National Health Service Corps: Milestones

1970

- NHSC created first scholarships
- Grew from 181 providers to over 1,800 in the first year
- Budget 10 times larger by end of decade

1980

- Loan Repayment Program launched
- Nearly 6,700 scholarships awarded
- New community-based programs begin hiring NHSC providers directly

1990

- Early 1990s: Only 1,000 providers serve due to budget reduction
- Mental health disciplines added to LRP
- Only 2,500 providers in service by end of decade

2000

- Increased funding supported unprecedented growth in field strength
- Physicians make up the largest discipline

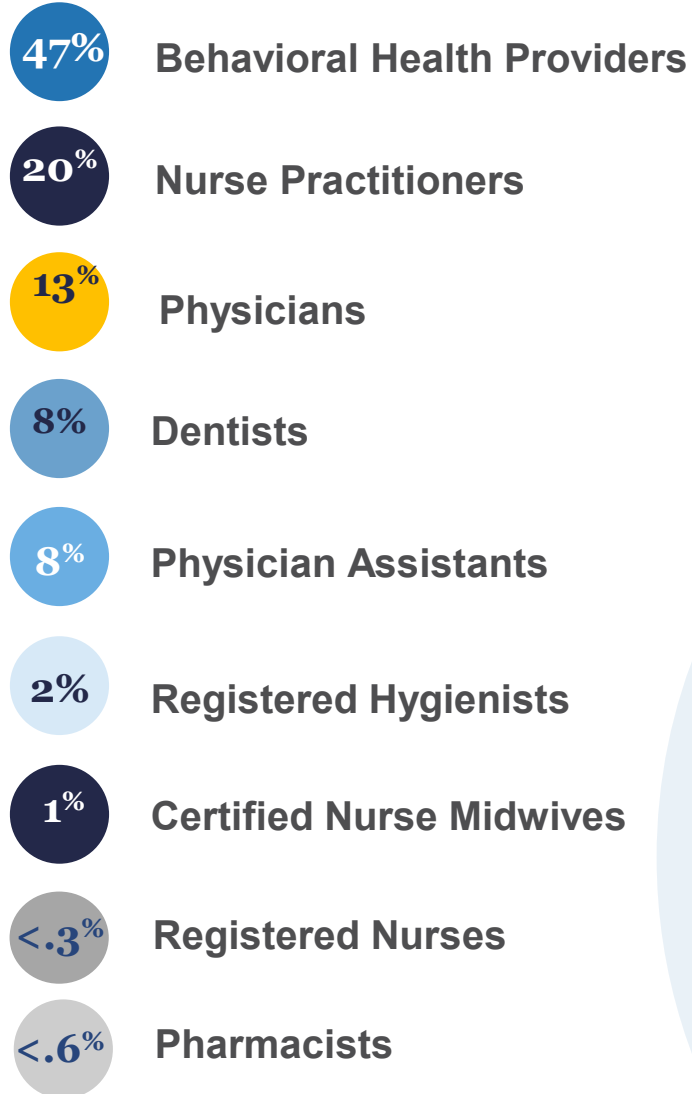
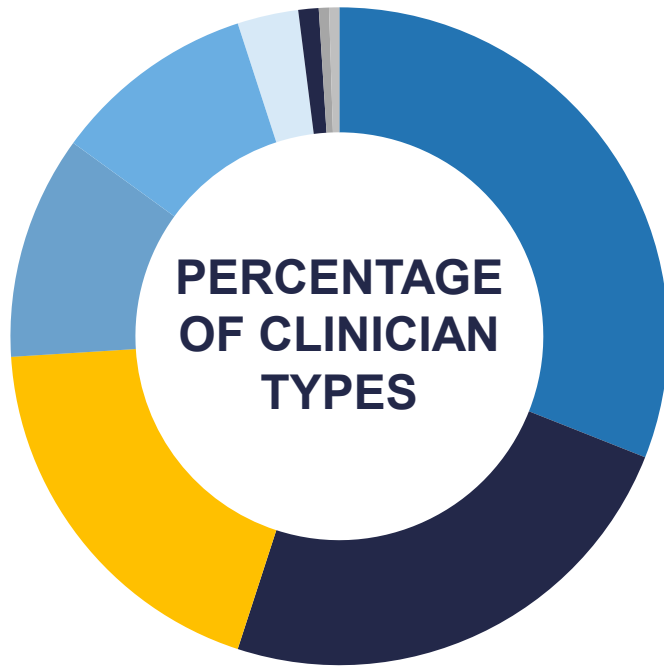
2010

- Patient Protection and Affordable Care Act of 2010 permanently reauthorizes the NHSC and creates a mandatory funding stream, as well as adding a part-time service option for members

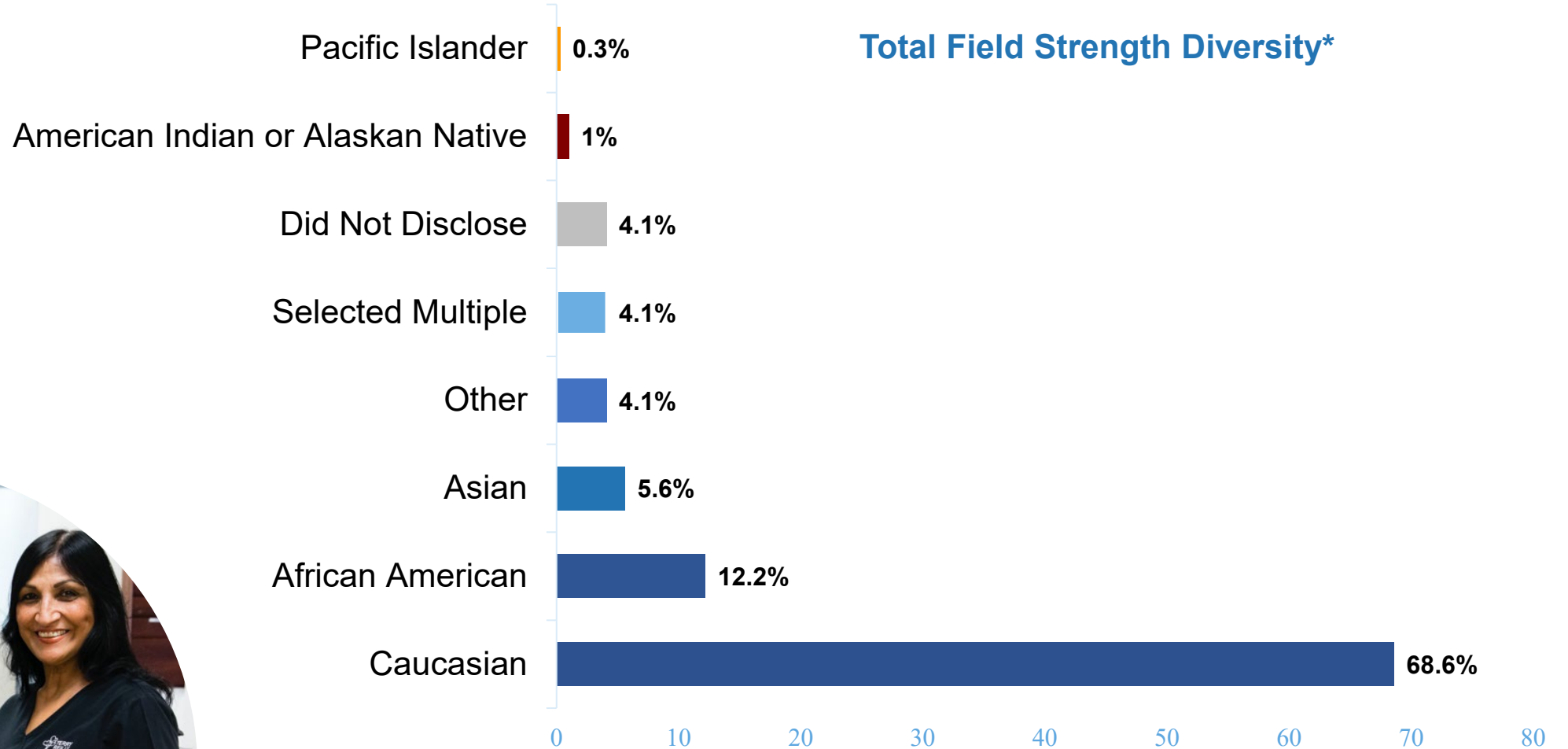
2020

- American Rescue Plan funds result in record field strength numbers – more than 20,000 participants
- Field strength clinicians dashboard comes online with current, analyzable provider data
- Nurses make up the largest discipline

National Health Service Corps: *Now*



National Health Service Corps: Now



**As of September 30, 2022*

Note: Of the respondents, 13% of the field strength identifies as Hispanic.



NHSC Fiscal Year 2022

Applications and Awards

Loan Repayment Programs

FY 2022



*Applications Received

9,842

*New Awards

7,705

**Figure includes three LRPs
and LRP continuations*

Students to Service

FY 2022



Applications Received

579

New Awards

368

State Loan Repayment Program

CURRENT



Awards Made to

46

States

1

Washington D.C.

3

U.S. Territories

Scholarship Program

FY 2022



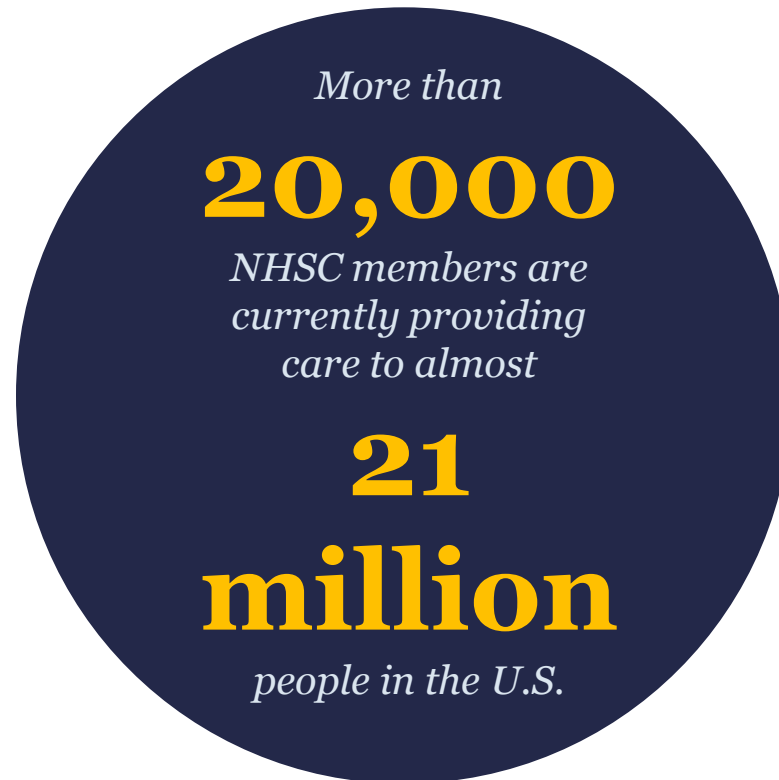
Applications Received

2,568

New Awards

1,199

Impact of the NHSC: Largest class in program history



- In 2021 and 2022, we awarded every eligible applicant making this our largest class of clinicians ever.
- Many NHSC members continue to serve in areas of greatest need beyond their service obligation.



Agenda

1: Loan Repayment Programs

- *Original* Loan Repayment Program
- Substance Use Disorder Workforce Loan Repayment Program
- Rural Community Loan Repayment Program
- Students to Service Loan Repayment Program

2: Scholarship Program

3: Participant Stories

4: Other Loan Repayment and Scholarship Programs

5: Support and Resources

Section 1

LOAN REPAYMENT PROGRAMS



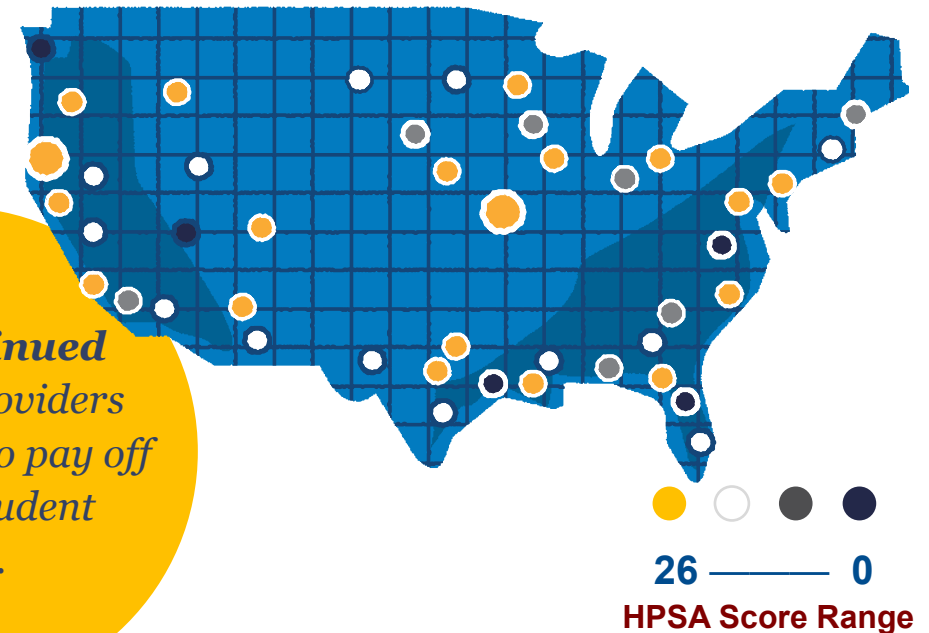
Loan Repayment Program

UP TO
\$50,000
FOR 2 YEARS OF
SERVICE

Offers fully trained primary care clinicians loan repayment in exchange for service in an area of greatest need, called a Health Professional Shortage Area (HPSA).

Higher HPSA Score = Higher Need

*With **continued service**, providers may be able to pay off all their student loans.*



Applicants working at NHSC-approved sites with higher HPSA scores are given priority.

Loan Repayment Program

Providers Receive Loan Repayment in Addition to a Competitive Salary from Their Employers

1

Providers find a job at an NHSC-approved site

2

Apply to the NHSC for loan repayment



Loan Repayment Program

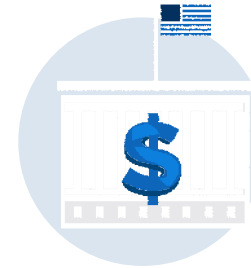
Eligibility



U.S. citizen or national



Currently work,
or applying to work,
at an NHSC-approved site



Have unpaid government
or commercial loans for
school tuition, reasonable
educational costs, and
reasonable living expenses,
segregated from all other
debts



Licensed to practice
in state where employer
site is located

Must be licensed in one of the following eligible disciplines:

- Physician (MD or DO)
- Nurse practitioner (primary care)
- Certified nurse-midwife
- Physician assistant
- Dentist (general or pediatric)
- Registered dental hygienist
- Psychiatrist
- Psychologist (health service)
- Licensed clinical social worker
- Psychiatric nurse specialist
- Marriage and family therapist
- Licensed professional counselor

SUBSTANCE USE DISORDER WORKFORCE LOAN REPAYMENT PROGRAM



Substance Use Disorder Workforce Loan Repayment Program

*Expands and
improves access to
quality opioid and
substance use
disorder treatment in
underserved areas
nationwide*



AWARDS UP TO
\$75,000
FOR A 3-YEAR SERVICE
COMMITMENT

- Must be trained and licensed to provide SUD treatment at NHSC-approved SUD treatment facilities

Substance Use Disorder Workforce Loan Repayment Program

Eligibility



Must be a U.S. citizen or national working at an NHSC-approved substance use disorder (SUD) treatment facility



Eligible Providers:

Medicine: MD, DO, NP, CNM, PA
Mental/Behavioral Health: HSP, LCSW, PNS, MFT, LPC
Substance Use Disorder Counselors
Registered Nurses
Pharmacists



Must be trained and licensed to provide SUD treatment



Must have unpaid government or commercial loans for school tuition, reasonable educational and living expenses, segregated from all other debts

Priority is given to applicants:

- With DATA 2000 waivers;
- Currently providing care in an opioid treatment program; or
- Who have a license or certification in substance use disorder interventions, such as master's-level substance use disorder counselors.

RURAL COMMUNITY LOAN REPAYMENT PROGRAM



Rural Community Loan Repayment Program

*Expands and improves access to quality opioid and substance use disorder treatment in **rural** areas*



AWARDS UP TO
\$100,000
FOR 3-YEAR SERVICE
COMMITMENT

- Must be trained and licensed to provide SUD treatment at NHSC-approved rural SUD treatment facilities

Rural Community Loan Repayment Program

Eligibility



Must be a U.S. citizen or national working at an NHSC-approved rural substance use disorder (SUD) treatment facility



Eligible Providers:
Medicine: MD, DO, NP, CNM, PA
Mental/Behavioral Health: HSP, LCSW, PNS, MFT, LPC
Substance Use Disorder Counselors
Registered Nurses
Pharmacists
Nurse Anesthetists



Must be trained and licensed to provide SUD treatment



Must have unpaid government or commercial loans for school tuition, reasonable educational and living expenses, segregated from all other debts

Priority is given to applicants:

- With DATA 2000 waivers;
- Currently providing care in an opioid treatment program at an NHSC-approved site; or
- Who have a license or certification in substance use disorder interventions, such as master's-level substance use disorder counselors.

STUDENTS TO SERVICE LOAN REPAYMENT PROGRAM



Students to Service Loan Repayment Program

Award

The NHSC offers up to \$120,000 in tax-free loan repayment for 3 years of full-time service or 6 years of half-time service. With continued service, eligible providers may be able to pay off all their student loans.



Students to Service Loan Repayment Program

Eligibility – MD, DO



U.S. citizen or national



Full-time student in the final year at an accredited school, pursuing a degree in medicine (MD or DO)



Must complete an accredited primary medical care residency in an NHSC-approved specialty (Internal Medicine, Family Practice, Pediatrics, OB/GYN, Psychiatry and Geriatrics)



Have unpaid government or commercial loans for school tuition, reasonable educational expenses, and reasonable living expenses, segregated from all other debts

Students to Service Loan Repayment Program

Eligibility – DDS, DMD



U.S. citizen or national



Full-time student in the final year at an accredited school, pursuing a degree in dentistry (DDS or DMD)



Encouraged (but not required) to complete an accredited postgraduate training in an NHSC-approved specialty (General Practice, Advanced Education in General Dentistry, Pediatric Dentistry, Public Health Dentistry, Geriatrics Dentistry Fellowship)



Have unpaid government or commercial loans for school tuition, reasonable educational expenses, and reasonable living expenses, segregated from all other debts

Students to Service Loan Repayment Program

Eligibility – NP or CNM



U.S. citizen or national



Full-time student in the final year at an accredited school, pursuing a degree in nursing (NP or CNM)



Encouraged (but not required) to complete an accredited postgraduate training in an NHSC-approved specialty (Approved postgraduate training for nurse practitioners and certified nurse midwives: a one-year postgraduate training in a community-based care setting.)



Have unpaid government or commercial loans for school tuition, reasonable educational expenses, and reasonable living expenses, segregated from all other debts

Students to Service Loan Repayment Program

Eligibility – PA



U.S. citizen or national



Full-time student in the final year at an accredited school, pursuing a physician assistant degree (PA)



Encouraged (but not required) to complete an accredited postgraduate training in an NHSC-approved specialty (Approved postgraduate training for physician assistants: a one-year postgraduate training in a community-based care setting.)



Have unpaid government or commercial loans for school tuition, reasonable educational expenses, and reasonable living expenses, segregated from all other debts

Section 2

SCHOLARSHIP PROGRAM



Scholarship Program

*Students
pursuing careers
in primary health care
can receive a
Scholarship now
and serve later*



Must be pursuing:

- A degree in medicine (allopathic or osteopathic) ;
- A degree in dentistry; or
- A postgraduate degree or postgraduate certificate from a school or program in nurse-midwifery education, physician assistant (PA) education, or nurse practitioner (NP) education specializing in adult medicine, family medicine, geriatrics, pediatrics, psychiatric-mental health, or women's health.

Scholarship Program

YEARS OF
SUPPORT
=
YEARS OF
SERVICE

Scholars commit to serve at an NHSC-approved site in a high-need area upon completion of their training: **2- to 4-year service commitment depending on years of support.**



Scholarship Program

Eligibility



U.S. citizen or national



Full-time student at an accredited school, pursuing a degree in:

- Medicine (DO or MD)
- Dentistry (DMD or DDS)
- Nurse practitioner
- Certified nurse-midwife
- Physician assistant (primary care)



Physicians are required to complete postgraduate training in an accredited primary care program.

Dentists, Advanced Practice Registered Nurses and Physician Assistants are encouraged (but not required) to complete an accredited postgraduate training in an NHSC-approved specialty.



*Scholarship pays tuition, a monthly stipend (taxable) and other reasonable educational and living expenses in exchange for a minimum of two (2) years of full-time service.

*Available up to 4 years

Scholarship Program

NHSC Scholar Site Selection

- Service begins upon graduation (and completion of any required primary care residency).
- **The NHSC works with Scholars to find a practice site** that's right for them and meets the required minimum HPSA score.
- When in service, Scholars earn a competitive salary paid by their site.



Section 3

PARTICIPANT STORIES



Section 4

OTHER LOAN REPAYMENT AND SCHOLARSHIP PROGRAMS



Other Loan Repayment and Scholarship Programs

State Loan Repayment Program (SLRP)

- Provides cost-sharing grants to states to operate their own loan repayment programs for primary care providers in underserved areas.
- **Eligible disciplines** vary, but may include:
 - Physicians,
 - Nurse practitioners,
 - Physician assistants,
 - Dental professionals,
 - Registered nurses,
 - Mental, behavioral health professionals,
 - Pharmacists, and
 - Substance use disorder counselors.



Other Loan Repayment and Scholarship Programs



- ✓ Original Loan Repayment Program
- ✓ Substance Use Disorder Workforce Loan Repayment Program
- ✓ Rural Community Loan Repayment Program
- ✓ Students to Service Loan Repayment Program
- ✓ Scholarship Program
- ✓ State Loan Repayment Program

- ✓ Loan Repayment Program
- ✓ Scholarship Program

- ✓ Native Hawaiian Health Scholarship Program
- ✓ Faculty Loan Repayment Program
- ✓ Scholarships for Disadvantaged Students
- ✓ Nurse Faculty Loan Repayment Program

Other Loan Repayment and Scholarship Programs

Loan Repayment Program (LRP) For Nurses Comparison

DISCIPLINES		
	NHSC LRP	Nurse Corps LRP
Primary Care Nurse Practitioner	X	X
Certified Nurse-Midwife	X	X
Psychiatric Nurse Specialist	X	X
Registered Nurse		X
Clinical Nurse Specialist		X
Nurse Anesthetist		X
Nurse Faculty		X

SERVICE COMMITMENT		
	NHSC LRP*	Nurse Corps LRP*
Full-time	2 Years Up to \$50,000 for HPSA ≥ 14 Up to \$30,000 for HPSA ≤ 13	2 Years (Full-time only) 60% of total qualifying educational loan balance
	2 Years Up to \$25,000 for HPSA ≥ 14 Up to \$15,000 for HPSA ≤ 13	3rd Year (Full-time only) 25% additional repayment of original loan balance
Half-time		
Full- or Half-time	1 or more additional years at your NHSC site, qualify for additional repayment funds	

**While NHSC Loan Repayment awards are not taxable, the full Nurse Corps Loan Repayment award is taxable. However, federal taxes are deducted from the Nurse Corps Loan Repayment award.*

Section 5

SUPPORT & RESOURCES



Support & Resources – Approved Sites

NHSC-Approved Sites

- NHSC clinicians serve at approved sites throughout the nation.
- NHSC-approved sites are outpatient facilities providing primary care medical, dental, and/or mental and behavioral health services.
- The facility may be located in a rural, urban or tribal community.
- To apply to become an NHSC site, the facility must be an [eligible site type](#) and meet applicable requirements.



Support & Resources – Eligible Site Types

NHSC Eligible Site Types

- Federally Qualified Health Centers
 - Community Health Center
 - Migrant Health
 - Homeless Program
 - Public Housing Program
 - School-Based Program
 - Mobile Clinic
- FQHC Look-Alikes
- Indian Health Service Facilities
- Certified Rural Health Clinics
- Correctional or Detention Facilities
(Federal/State/Immigration and Customs Enforcement)
- Critical Access Hospitals
- Community Mental Health Centers
- State or Local Health Departments
- Community Outpatient Facilities
 - Hospital Affiliated
 - Non-Hospital Affiliated
- Private Practices (Solo & Group Practice)
- School-Based Clinics
- Mobile Clinics
- Free Clinics
- Substance Use Disorder Treatment Facilities

Support & Resources – Approved SUD Treatment Facilities

NHSC-Approved Substance Use Disorder (SUD) Eligible Treatment Facilities

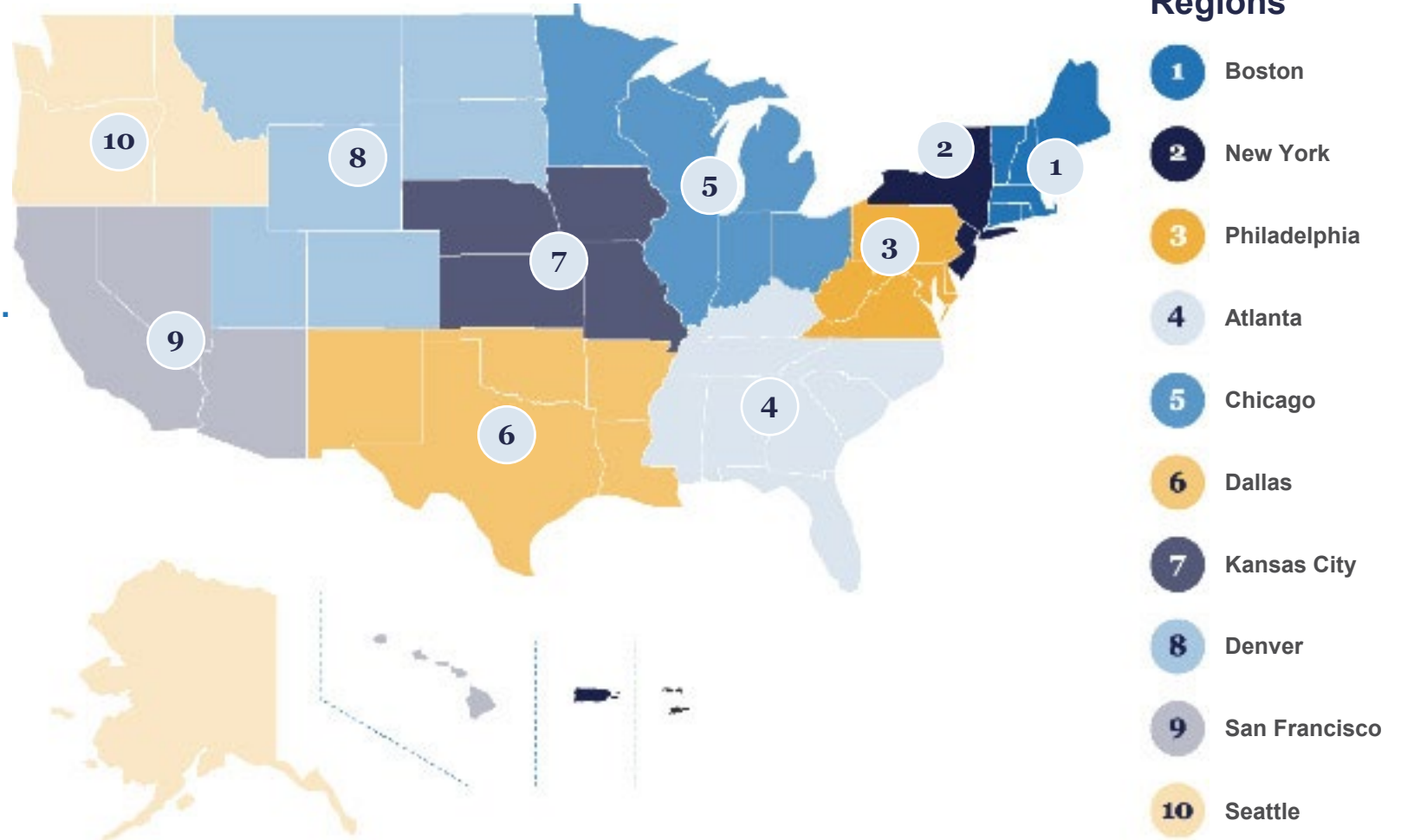
To be an NHSC-approved SUD treatment facility, sites must have demonstrated that they meet the requirements set forth in the NHSC Site Agreement and NHSC Site Reference Guide, including submission of SUD documentation.

- SAMHSA-certified opioid treatment programs (OTPs)
- Office-based opioid treatment facilities (OBOTs)
- Non-opioid substance use disorder treatment facilities (SUD treatment facilities)
- Federally Qualified Health Care Centers (FQHCs)
- Rural Health Clinics (RHCs)
- American Indian Health facilities
- FQHC Look-Alikes
- State or federal correctional facilities
- Critical Access Hospitals
- Community health centers
- State or local health departments
- Community outpatient facilities
- Private practices
- School-based clinics
- Mobile units and free clinics

Support & Resources – DRO Regional Offices

Support for Providers

- Support for you in your region
- Dedicated BHW staff located in 10 regional offices provide dedicated contacts for your area.
- Find your contact on the NHSC website



Support & Resources – Health Workforce Connector: Job Seekers

Health Workforce Connector (HWC)

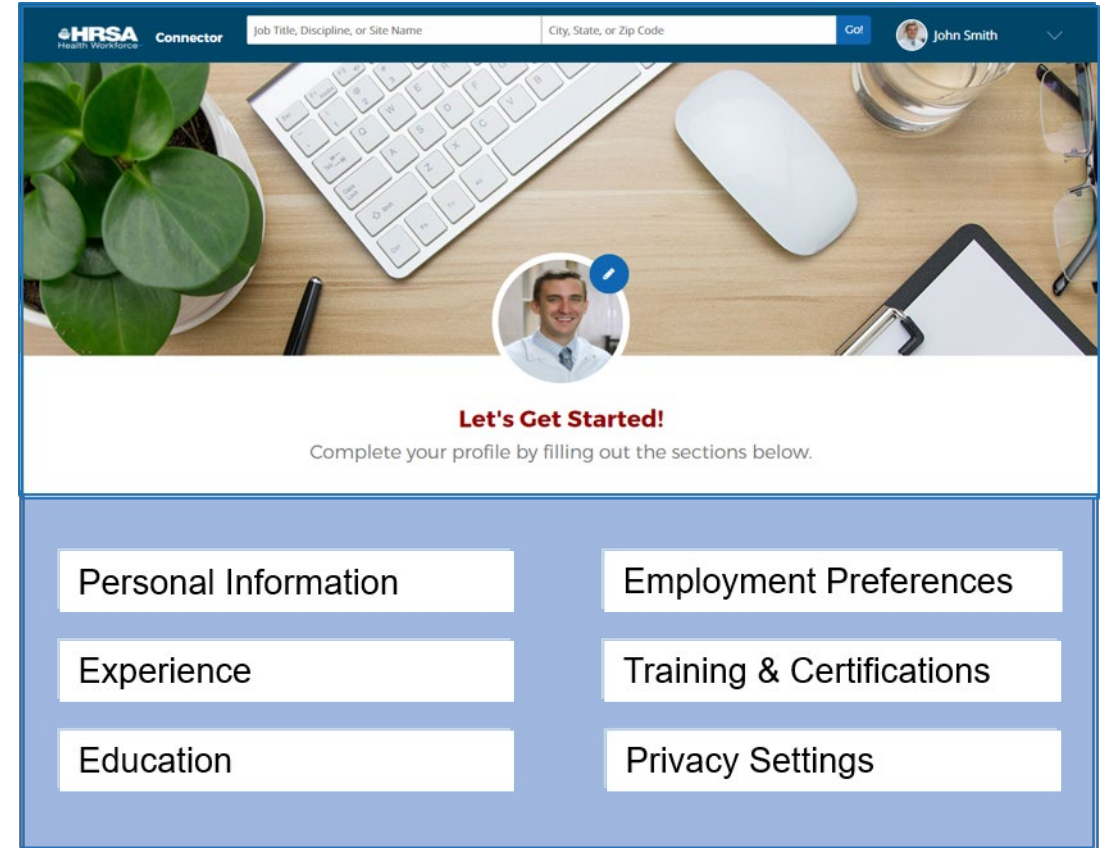
- View job vacancies at thousands of NHSC- and Nurse Corps-approved sites nationwide.
- Google Maps technology allows users to view the surrounding community (e.g., schools, restaurants, parks, places of worship, shops)
- Narrow your job search by:
 - Field of Practice
 - Specialty
 - HPSA Score
 - Site Name
 - Zip Code
 - Sites with Open Positions



Support & Resources – Job Seeker Profiles

Health Workforce Connector (HWC) Profiles

- Health Workforce Connector provides a free service for primary medical, dental and behavioral health job seekers to: upload a resume or CV, credential documents, personal information and search for jobs in underserved areas throughout the nation.
- Verified recruiters and site administrators can search for potential candidates from a database of job seeker profiles, including NHSC and Nurse Corps participants.

A screenshot of the HRSA Health Workforce Connector website. The top navigation bar includes the HRSA logo, the word "Connector", and search fields for "Job Title, Discipline, or Site Name" and "City, State, or Zip Code". A user profile for "John Smith" is visible in the top right. The main content area features a background image of a desk with a keyboard, mouse, and plant. A circular profile picture of a man is shown with a blue checkmark. Below the image, the text "Let's Get Started!" is displayed in red, followed by the instruction "Complete your profile by filling out the sections below." A grid of six white buttons with blue borders is shown, arranged in two columns and three rows. The buttons are labeled: "Personal Information", "Employment Preferences", "Experience", "Training & Certifications", "Education", and "Privacy Settings".

Personal Information	Employment Preferences
Experience	Training & Certifications
Education	Privacy Settings

Questions





Support & Resources – Contact Us

LCDR Tara Dondzila, Public Health Analyst

Division of Regional Operations - Chicago

Bureau of Health Workforce (BHW)

Health Resources and Services Administration (HRSA)

Phone: 1-800-221-9393 (Customer Center); M-F, 8 a.m. to 8 p.m. ET, except federal holidays

Web <http://nhsc.hrsa.gov>

Virtual Job Fair: <http://jobfair.hrsa.gov>

Health Workforce Connector: <http://connector.hrsa.gov/>

 Facebook: <http://facebook.com/nationalhealthservicecorps>

 Twitter: <http://twitter.com/NHSCorps>

 LinkedIn: <http://www.linkedin.com/company/national-health-service-corps>

Connect with HRSA

Learn more about our agency at:

www.HRSA.gov



Sign up for the HRSA eNews

FOLLOW US:

